






# Wirkungsanalyse von Plan 10 auf Modell "schutzwürdige Freiräume"

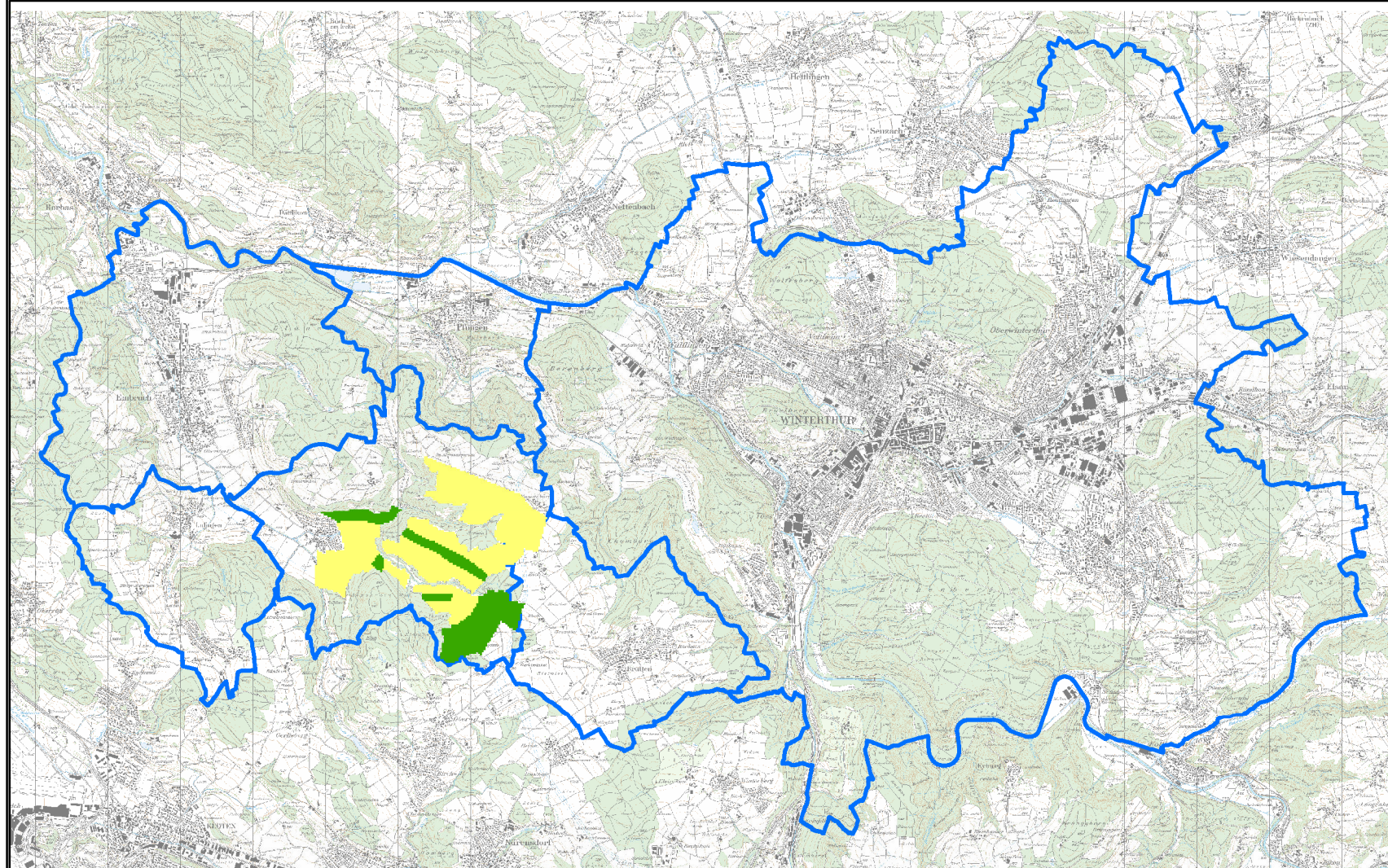
Datum: 12.12.2013, Danielle Meyer, Fabienne Brändle

Dokumentation : [http://giswiki.hsr.ch/GIS2\\_2013\\_Gruppe4](http://giswiki.hsr.ch/GIS2_2013_Gruppe4)

**Total Punkte  
3124**

Plan 10

Value	Value	Count	Points
 -2	0	4149	0
 -1	2	1562	3124
 0			
 1			
 2			



Graph of Plan 10

