

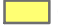




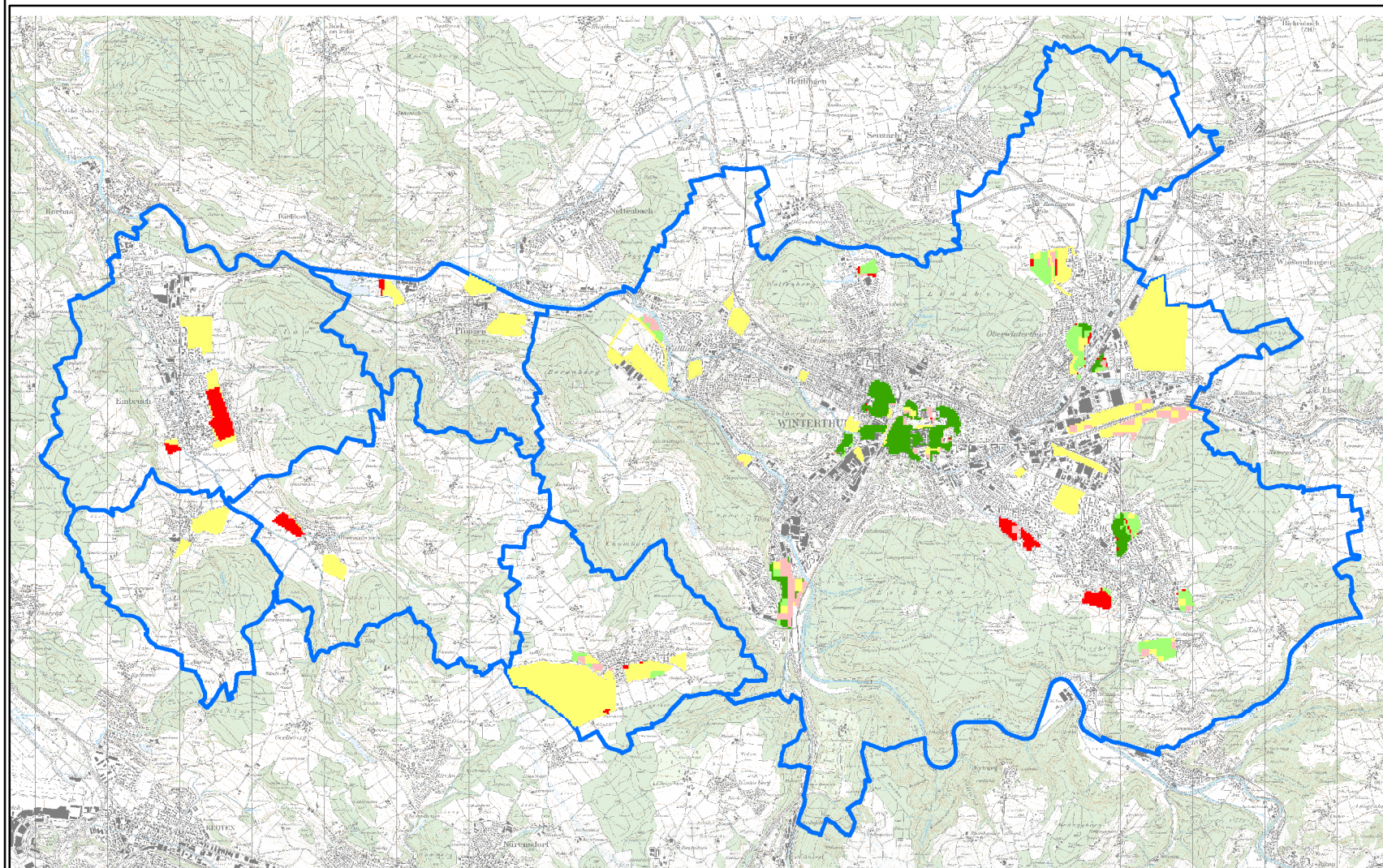
Wirkungsanalyse von Konsum- und Kulturangebot auf Modell Veränderungspotential der Bevölkerung

**Total Punkte
1140**

Datum: 12.12.2013, HR Beck, Michael Meier

Dokumentation : http://giswiki.hsr.ch/GIS2_2013_Gruppe10

Wirkungsraster Value	Value	Count	Points
 -2	-2	677	-1354
 -1	-1	118	-118
 0	0	3353	0
 1	1	288	288
 2	2	1162	2324



Wirkungsflächen

