






Wirkungsanalyse von Veränderungspotential der Bausubstanz auf Modell Veränderungspotential der Bevölkerung

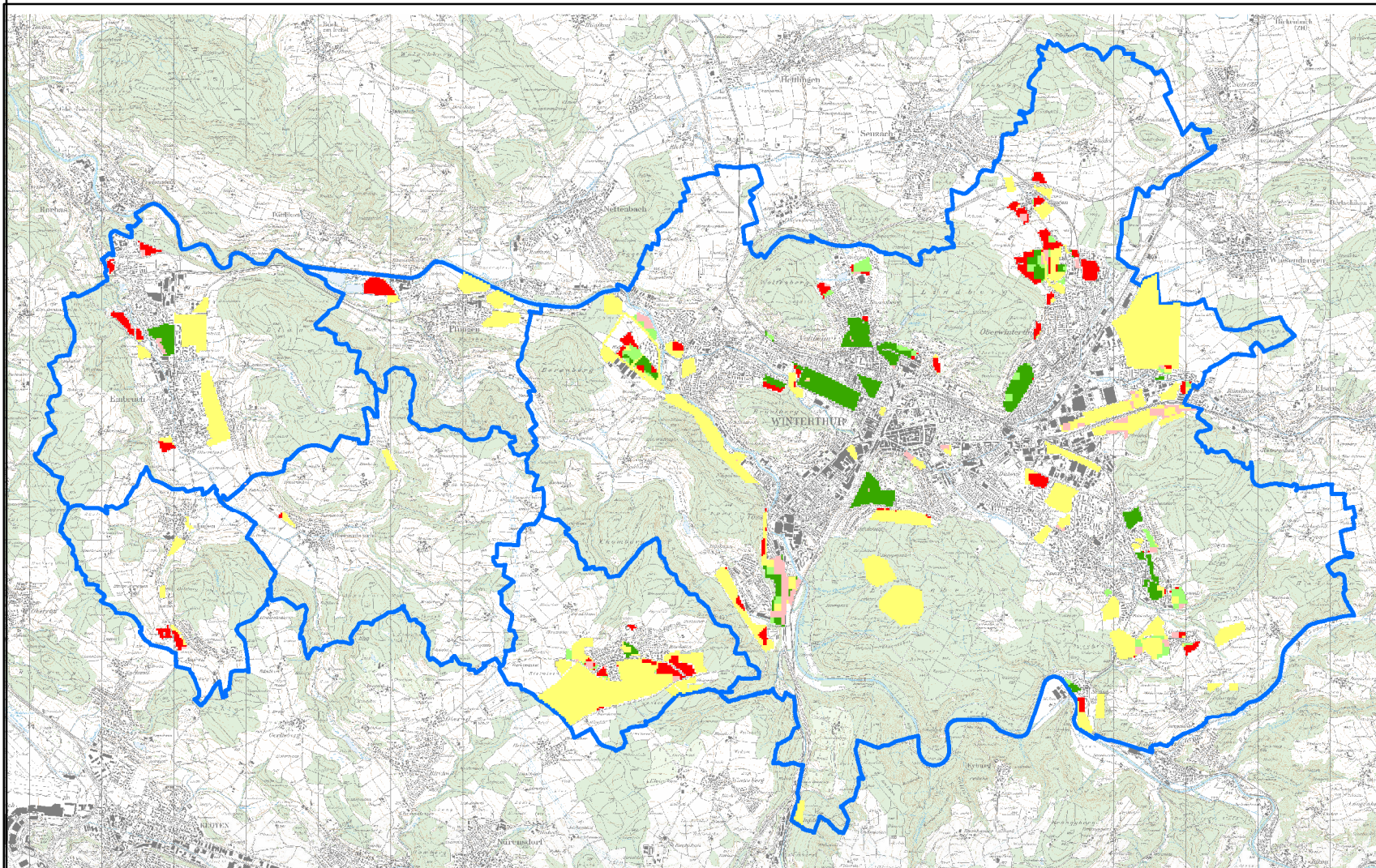
**Total Punkte
1017**

Datum: 12.12.2013, HR Beck, Michael Meier

Dokumentation : http://giswiki.hsr.ch/GIS2_2013_Gruppe10

Wirkungsraster

Value	Value	Count	Points
 -2	-2	1425	-2850
 -1	-1	185	-185
 0	0	5298	0
 1	1	278	278
 2	2	1887	3774



Wirkungsflächen

